

2019 CATALOGUE

flolux®
stainless steel pool fittings



flojet



PRODUCT:

FloJet 40mm (1.5") Eyeball Return Jet, Push Fit

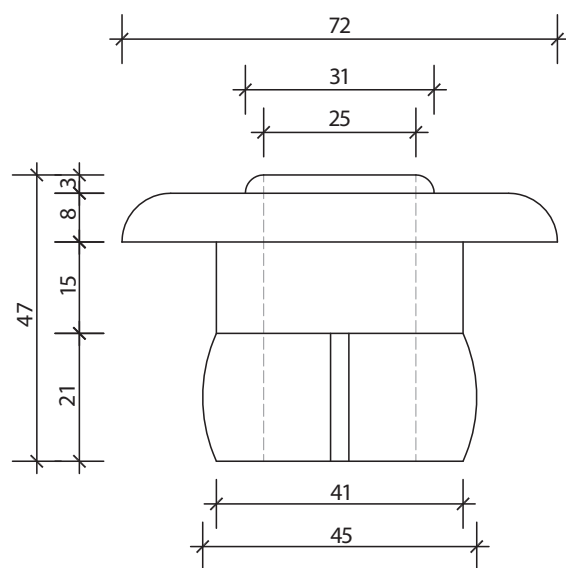
PRODUCT CODE :

FLX001

MATERIAL :

316L Stainless Steel Fascia

PVC Backing



flosuction^{40mm}



PRODUCT:

FloSuction 40mm (1.5") Safety Suction, Push Fit

PRODUCT CODE :

FLX002

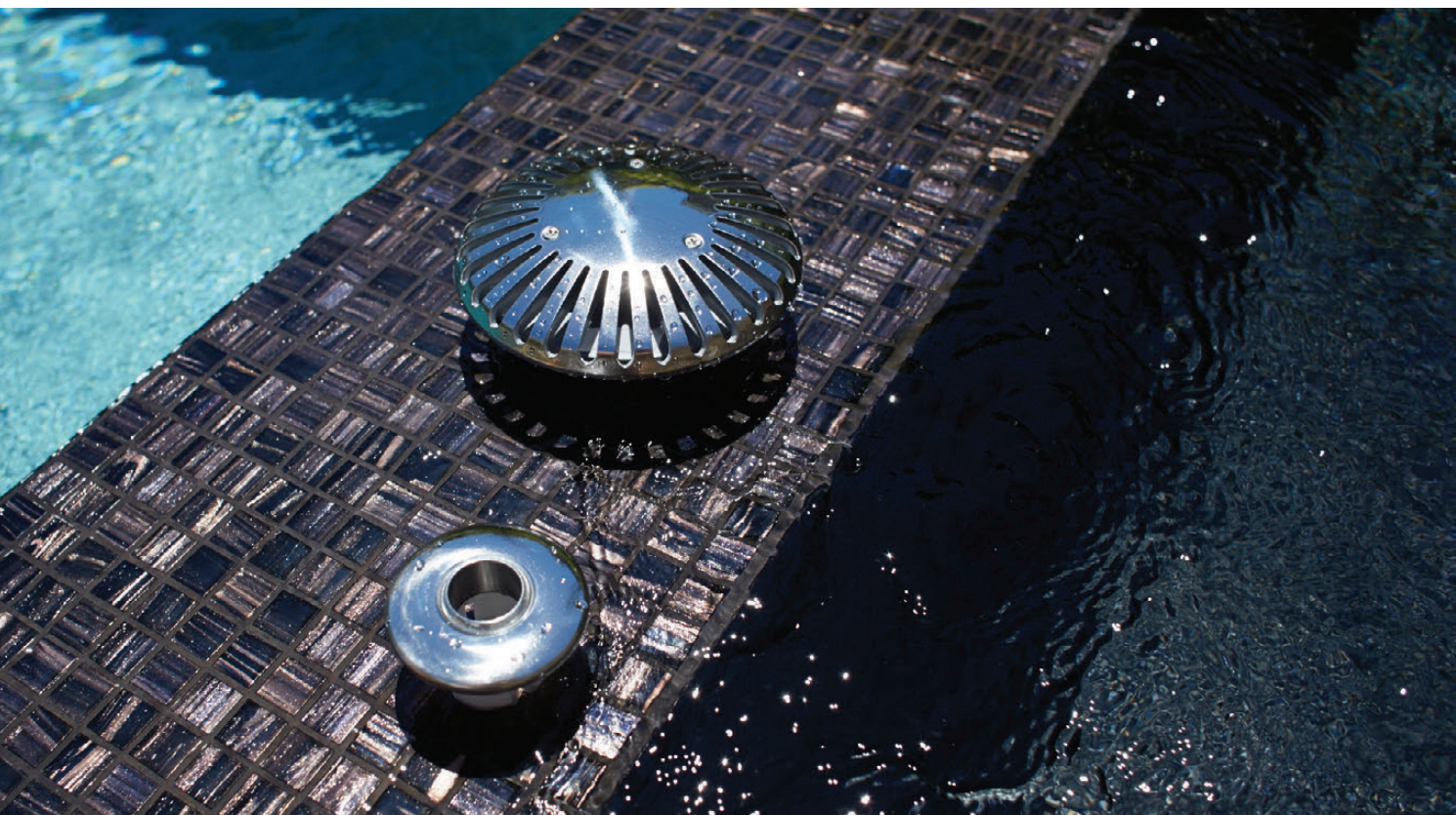
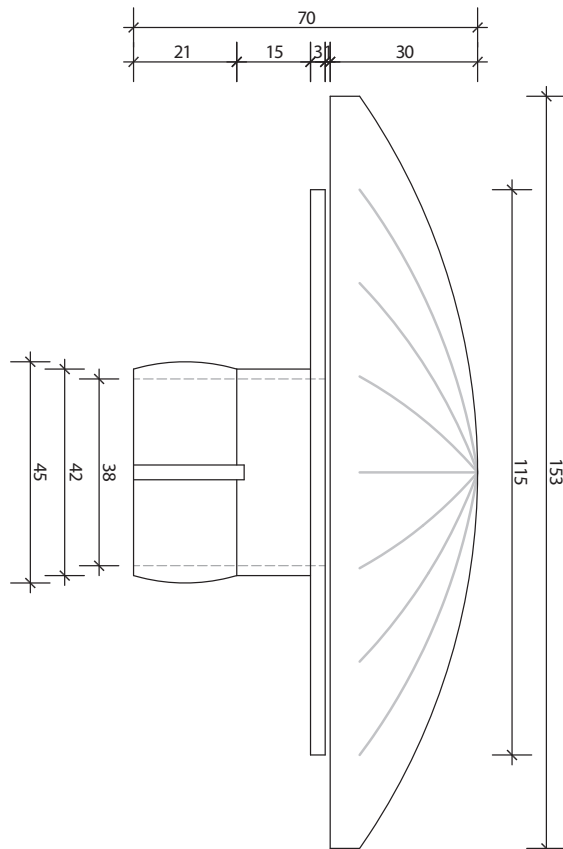
MATERIAL :

316L Stainless Steel Fascia

PVC Backing (AS1926.3.2010 Approved 250L/PM)

Australian Standards Approved

Minimum two flosuction's per common suction line.



floair



PRODUCT:

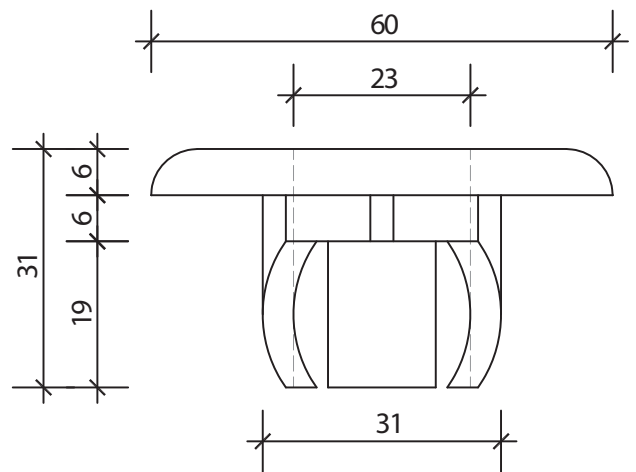
FloAir 25mm (1") Air Diffuser, Push Fit

PRODUCT CODE :

FLX003

MATERIAL :

316L Stainless Steel Fascia
PVC Backing

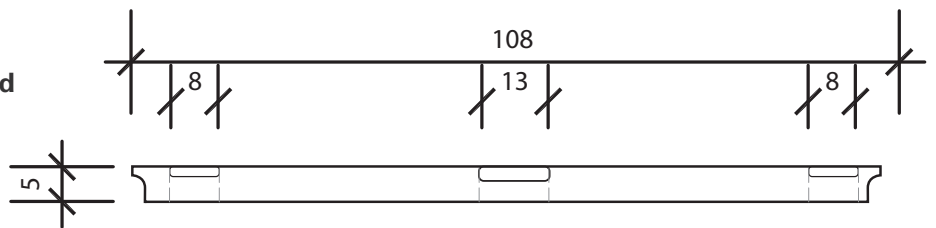




PRODUCT:
FloFloor Fascia, Screw Fastened

PRODUCT CODE :
FLX004

MATERIAL :
316L Stainless Steel Fascia
FloFloor fascia can be used with Waterco and Hayward
PVC Floor returns



flofloor



PRODUCT:

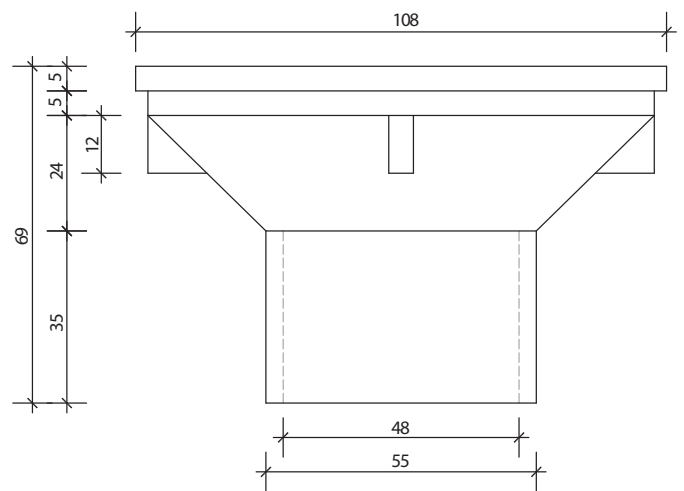
FloFloor 40mm & 50mm (1.5"-2") Floor Inlet, Slip Fit-Glued

PRODUCT CODE :

FLX005

MATERIAL :

**316L Stainless steel Fascia,
PVC Backing**



flojet THREADED



PRODUCT:

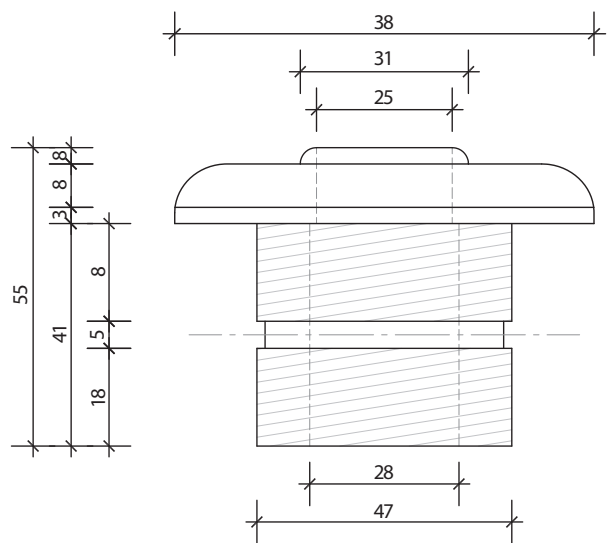
FloJet Threaded 40mm (1.5") Eyeball Return Jet,
Threaded Fit (Fibreglass Pool)

PRODUCT CODE :

FLX006

MATERIAL :

316L Stainless Steel Fascia
PVC Backing



floadapter



PRODUCT:

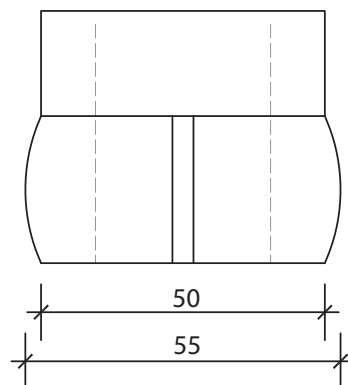
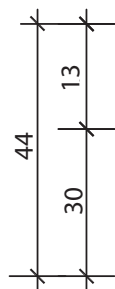
Adapter 40mm up to 50mm
(1.5"-2") adaptor for FloJet Only Push fit

PRODUCT CODE :

FLX007

MATERIAL :

PVC Only



floair ^{CONTROL}



PRODUCT:

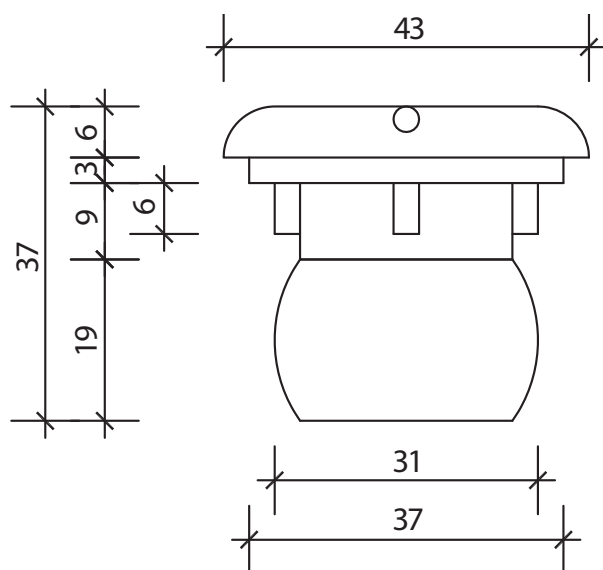
Air Control 25mm (1")
Air Venturi, Push Fit

PRODUCT CODE :

FLX008

MATERIAL :

316L Stainless Steel Fascia
PVC Backing



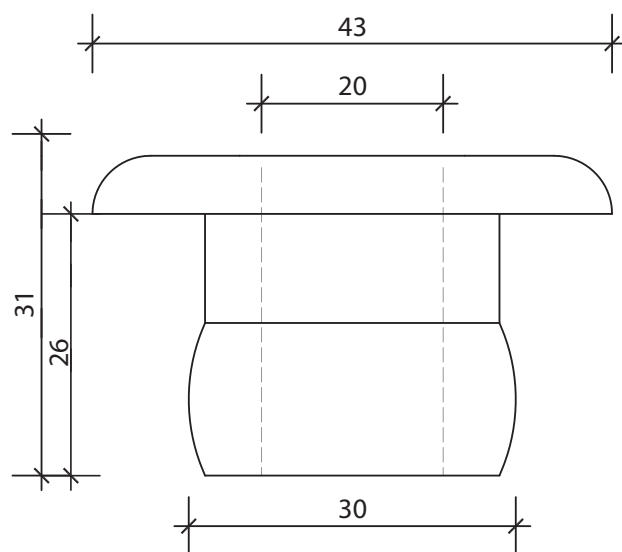
flobubbler



Bubbler 25mm (1")
Dress Ring, Water Spout, Push Fit

PRODUCT CODE :
FLX009

MATERIAL :
316L Stainless steel only



flosuction^{50mm}



PRODUCT:

FloSuction 50mm (2")
Safety Suction, Push Fit

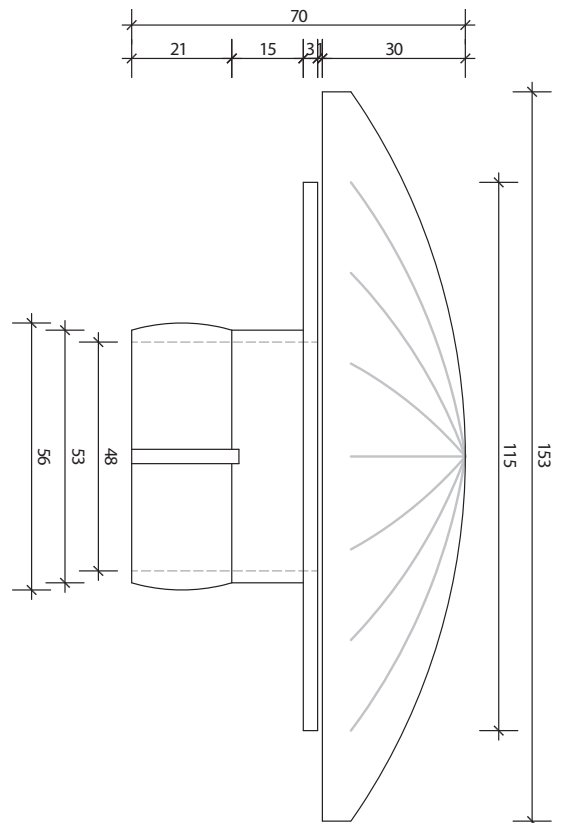
PRODUCT CODE :

FLX010

MATERIAL :

316L Stainless Steel Fascia
PVC Backing (AS1926.3.2010 Approved 280L/PM)
Australian Standards Approved

Minimum two flosuction's per common suction line.



flosuction THREADED



PRODUCT:

FloSuction 50mm (2") Safety Suction for Fibreglass Pools, Slip Fit + Locking Nut-Glued

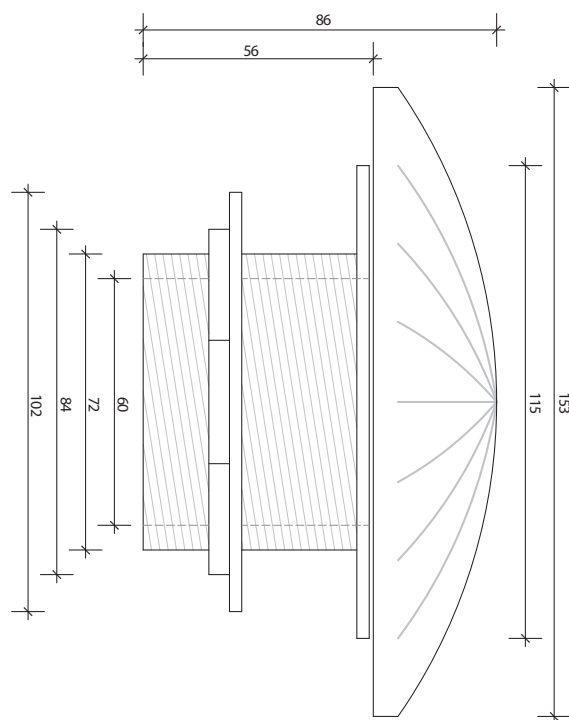
PRODUCT CODE :

FLX011

MATERIAL :

**316L Stainless Steel Fascia
PVC Backing (AS1926.3.2010 Approved 280L/PM)
Australian Standards Approved**

Minimum two flosuction's per common suction line.





PRODUCT:

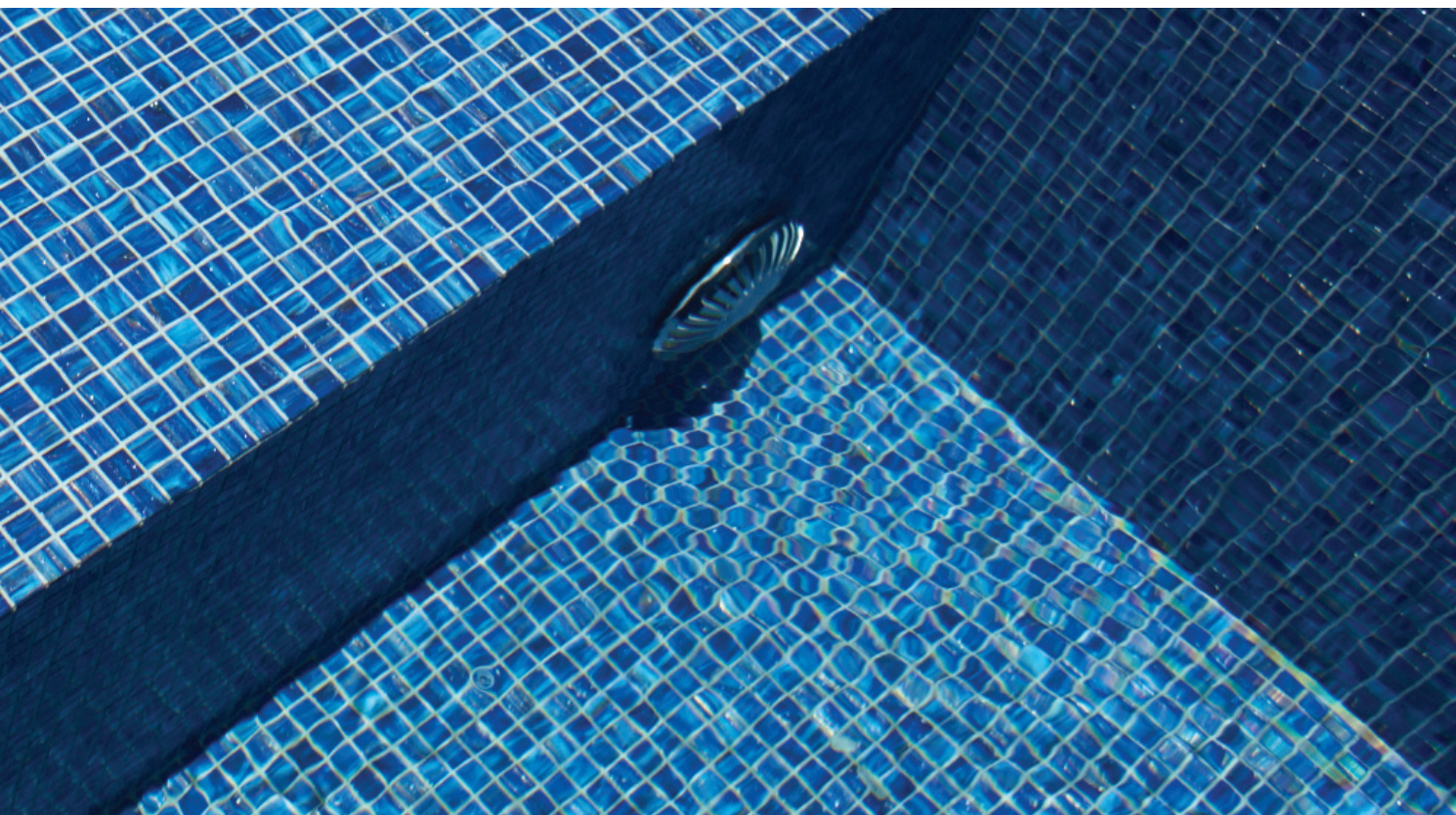
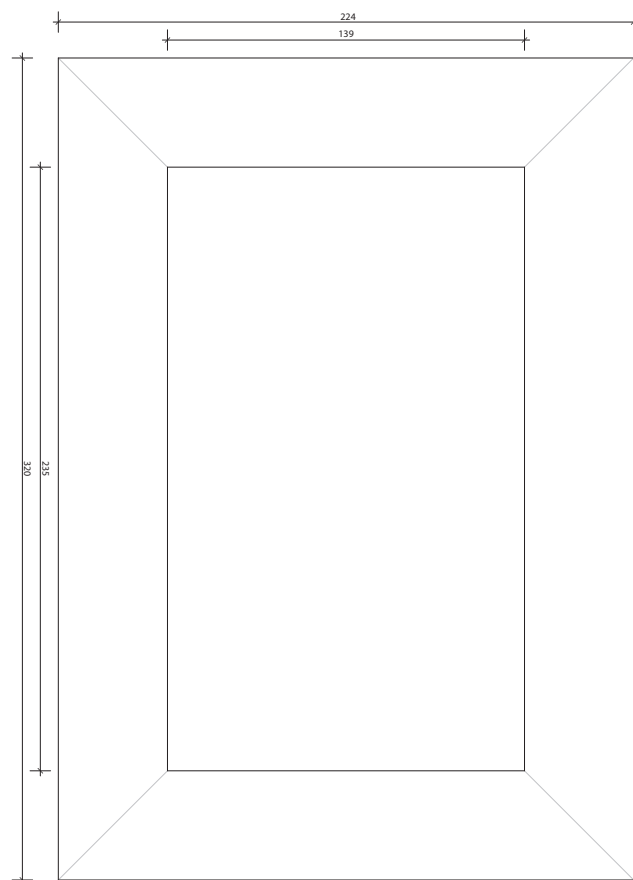
FloSkimmer Skimmer Box Fascia
Glued Fascia to fit Astral, Waterco and
Zodiac Skimmers (ask for available sizes)

PRODUCT CODE :

FLX012-ASTRAL
FLX013-WATERCO + ZODIAC

MATERIAL :

316L Stainless Steel Fascia Only



flosuction

PVC 40mm



PRODUCT:

FloSuction Plastic 40mm (1.5")
Safety Suction, Push Fit

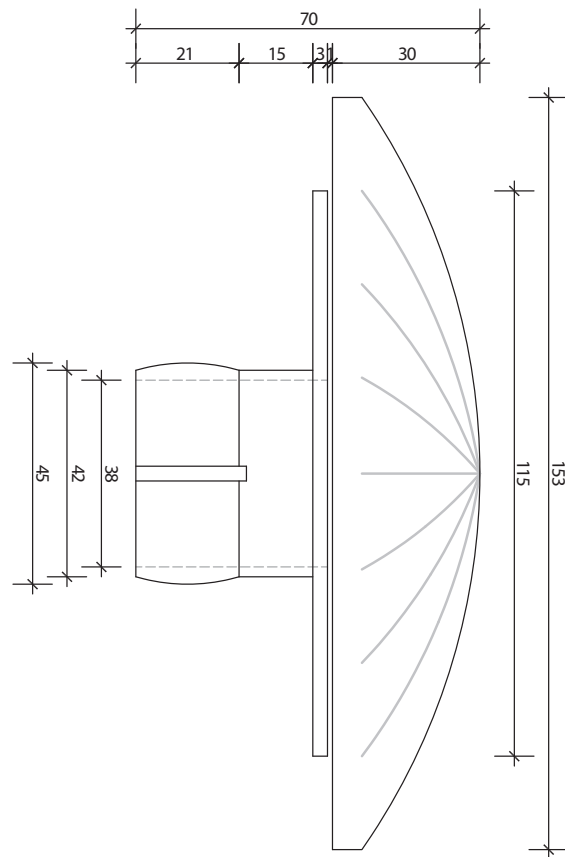
PRODUCT CODE :

FLX014

MATERIAL :

PVC Only
(AS1926.3.2010 Approved 250L/PM)
Australian Standards Approved

Minimum two flosuction's per common suction line.



flosuction

PVC 50mm



PRODUCT:

FloSuction Plastic 50mm (2")
Safety Suction, Push Fit

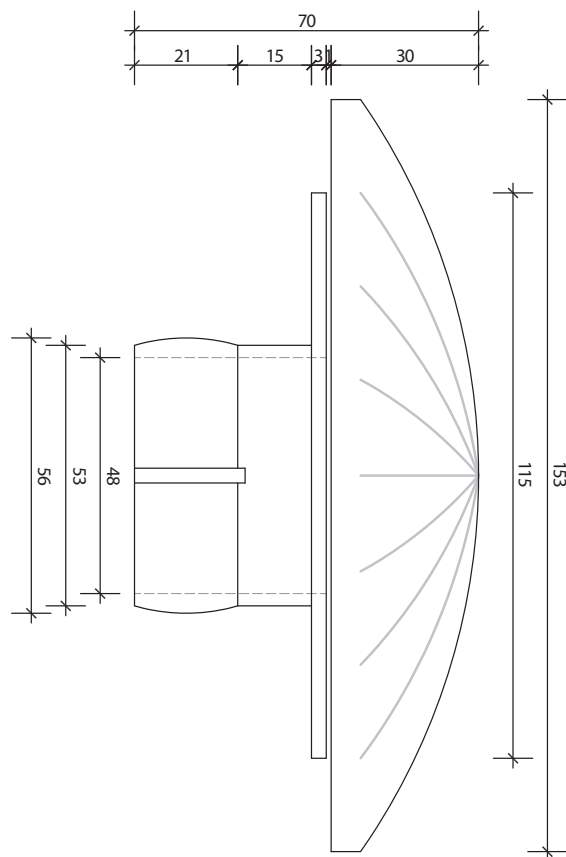
PRODUCT CODE :

FLX015

MATERIAL :

PVC (AS1926.3.2010 Approved 280L/PM)
Australian Standards Approved

Minimum two flosuction's per common suction line.



flosuction

PVC THREADED



PRODUCT:

FloSuction Plastic 50mm (2")
Fiberlass Pools

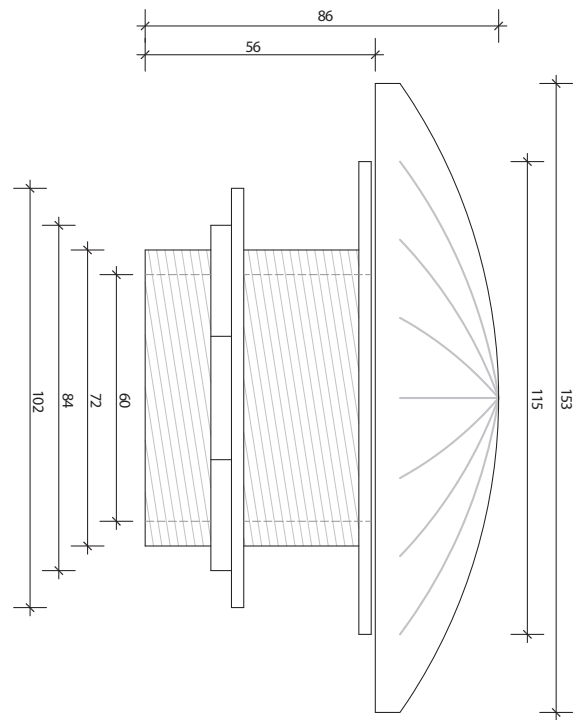
PRODUCT CODE :

FLX016

MATERIAL :

PVC Only
Australian Standards Approved

Minimum two flosuction's per common suction line.



Incomparable finishing for
luxury pools and spas.





CHRIS ADAMS

E: chris@flolux.com

M: +61 407 639 557

www.flolux.com

